

TECNOCLICK / CLOSED OFFICE PARTITIONS

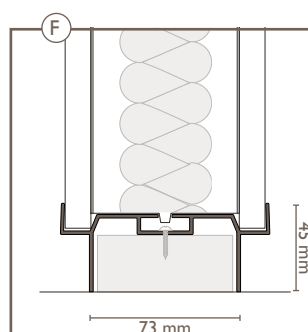
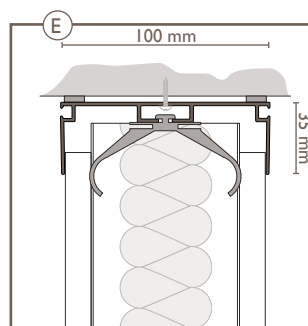
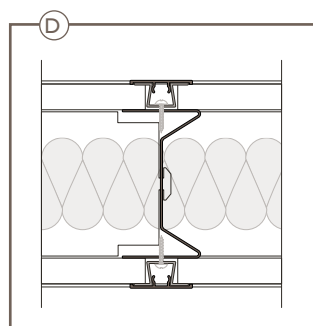
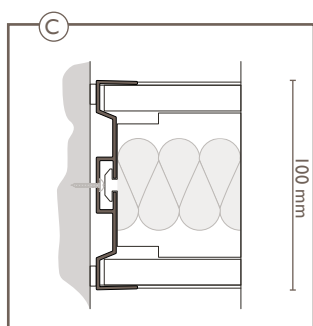
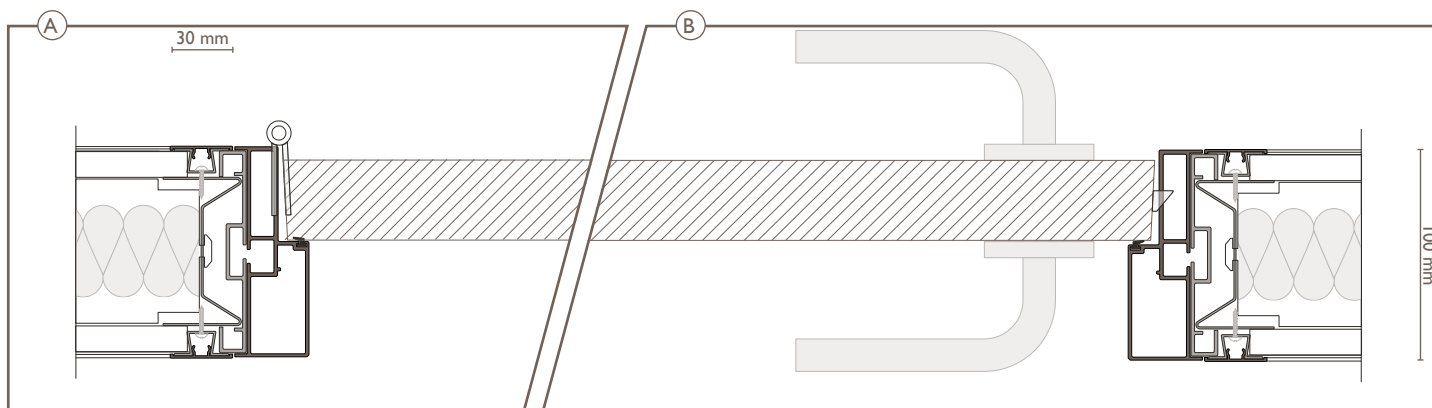
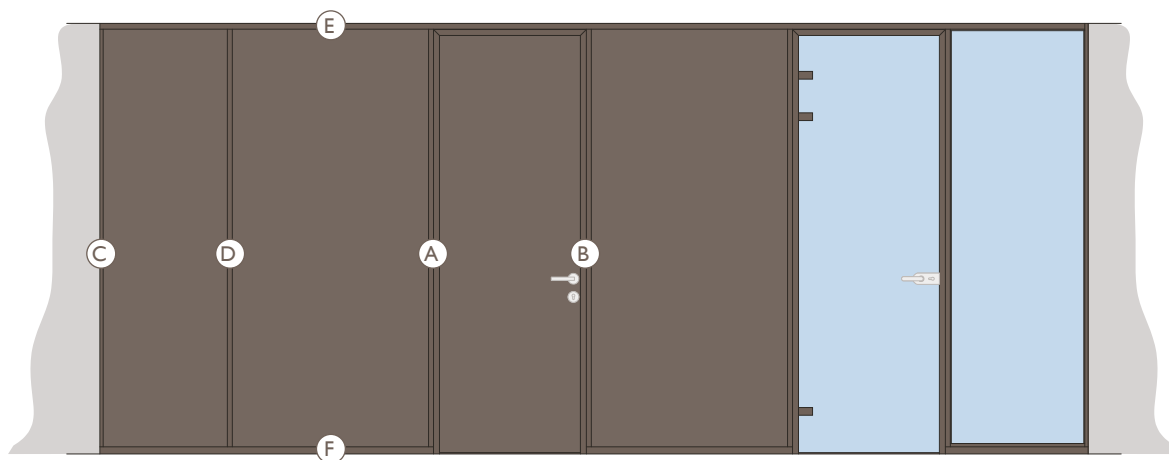


TecnoClick is the most basic wall in the range, with the same qualities as our other walls. It is a complete walling system with surface-mounted sections. Rapid erection and a friendly budget are convincing arguments to opt for this wall. TecnoClick combines with TecnoLine double-glazed walls in monobloc and TecnoPure Lite glass walls.

WALL THICKNESS	100 mm
PANELS	melamine-surfaced chipboard, vinyl plasterboard or plasterboard
MODULE TRANSITION	aluminium click section on steel omega, width 30 mm
MODULE WIDTH	1.200 mm
WALL HEIGHT	standard up to 3,000 mm, with intermediate rail up to 3,500 mm, higher in consultation
VISIBLE SECTIONS	extruded aluminum, with powder coating or anodised
CEILING SECTIONS	35 mm high, aluminium with integrated painting rail
FLOOR SECTIONS	45 mm high, set back, aluminium. Optional 20 mm or 35 mm straight skirting
INSULATION	standard 45 mm mineral wool, density 37.7 kg/m ³ , optionally 60 mm
DOOR FRAME	suitable for solid plain door; all-glass door or aluminum-framed doors
OPTIONAL	electric opener; light switch next to door
DOOR SECTIONS IN STOCK	plain anodised. White 90% gloss. Grey metallic RAL 9006 30% gloss
SOUND INSULATION RW (ISO 717)	44 to 51 dB, depending on the composition of the wall
FIRE RESISTANCE	optionally RF30 (only in combination with vinyl plasterboard or plasterboard panels)



TECNOCLICK / DETAILS



TECNOCLICK / CONNECTION TECNOLINE & TECNOPURE LITE

